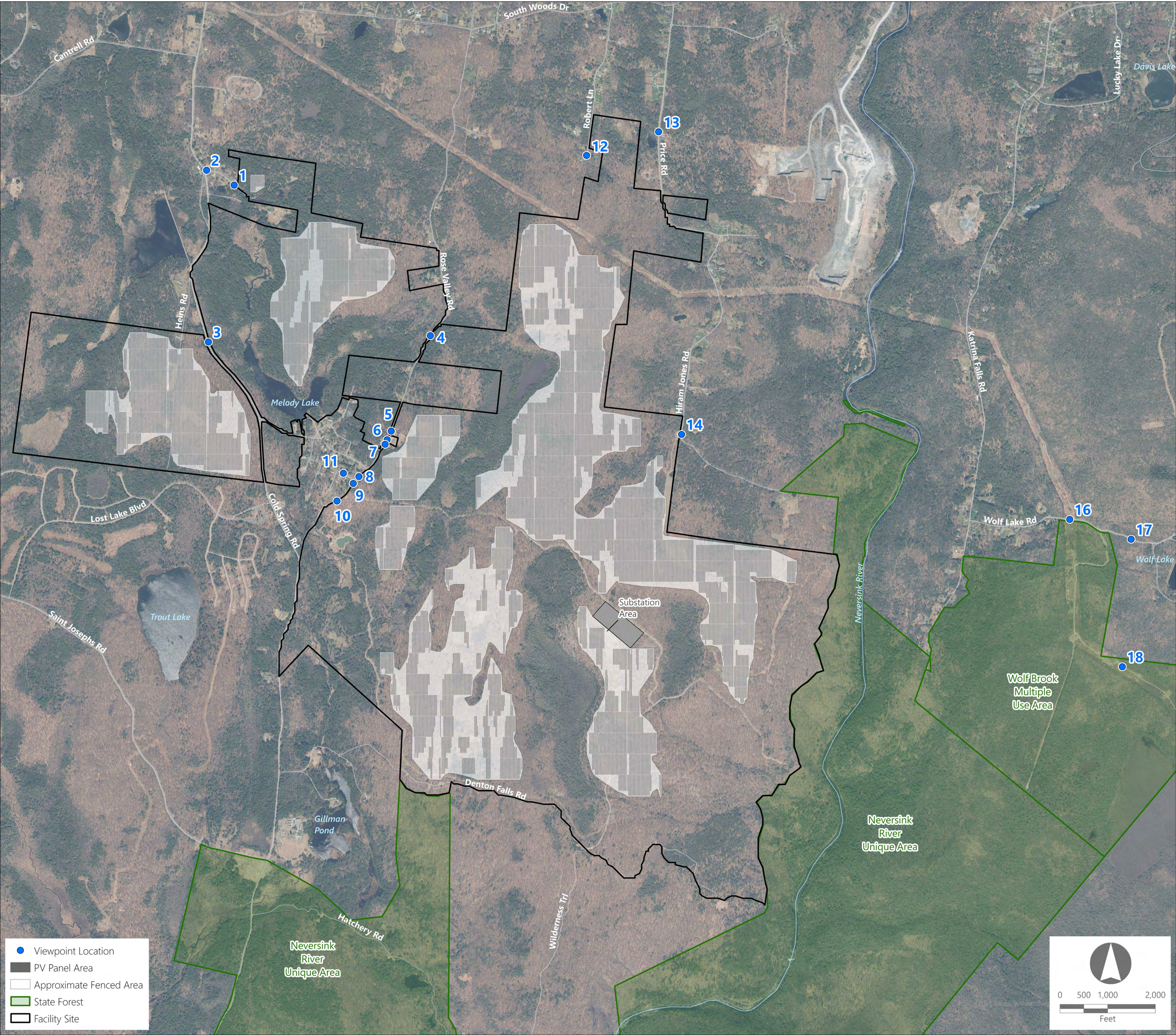


Town Line Solar Project

Visual Impact Assessment Study

Project Components and Viewpoint Locations



Candidate Viewpoints for Photosimulation Development

Based on a preliminary viewshed analysis and the location of identified visually sensitive resources, field work was completed December 2024. The following viewpoints have been identified as candidates for photosimulation development. Additional viewpoints will be documented in future field efforts and considered for photosimulation development in order to represent the full range of visual change that would occur with the project in place within a 2-mile visual study area.



View looking west from Cold Spring Road in the Town of Thompson and the foreground distance zone.



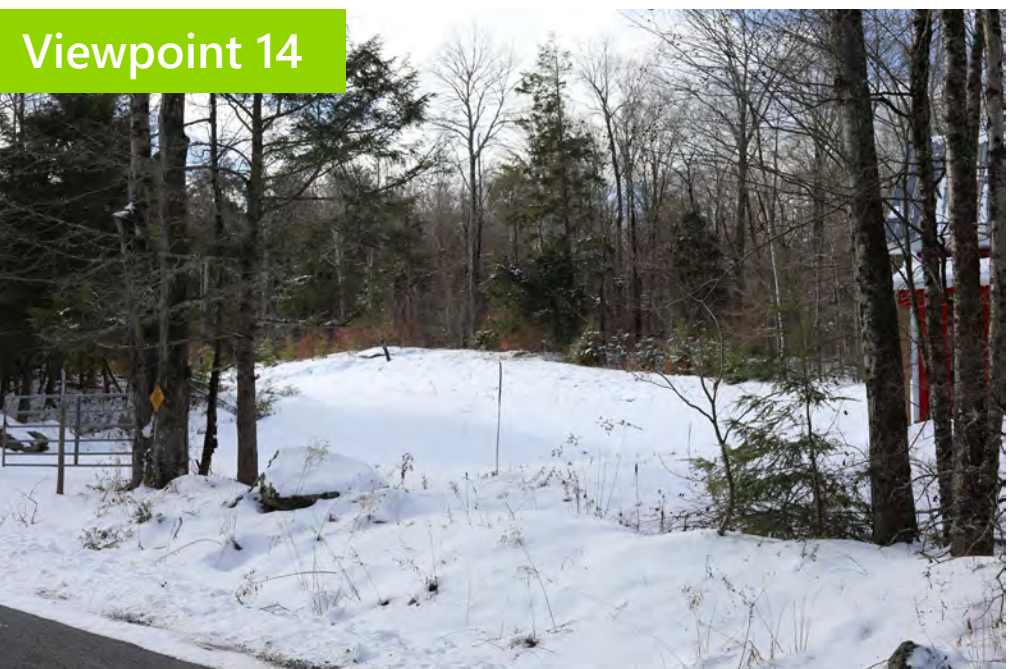
View looking east from Rose Valley Road in the Town of Thompson and the near-foreground distance zone.



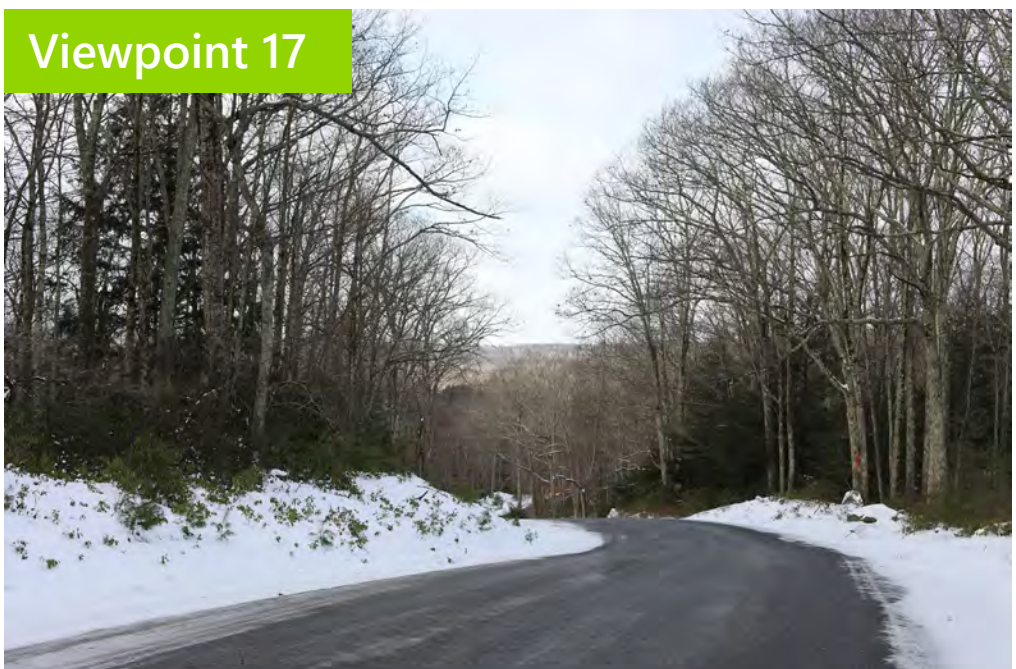
View looking east from Rose Valley Road in the Town of Thompson and the foreground distance zone.



View looking east from Hemlock Drive in the Town of Thompson and the foreground distance zone.



View looking southwest from Hiram Jones Road in the Town of Thompson and the foreground distance zone.



View looking west from Wolf Lake Road in the Town of Thompson in the middle ground distance zone.



View looking northwest from Wolf Brook Multiple Use Area in the Town of Thompson and the middle ground distance zone.